



**Correct behaviour in  
cases of emergency**

**at the  
Montanuniversität Leoben**

**FOR YOUR SAFETY!**

# WELCOME AT MONTANUNIVERSITÄT LEOBEN

## AN EMERGENCY IS CHALLENGING FOR US ALL

Being confronted with exceptional circumstances means having to act quickly while remaining calm.

But how should we react when a medical emergency occurs or a fire breaks out close to us?

This brochure will explain the best ways for us as visitors or members of the Montanuniversität Leoben to behave in such situations.

You need to be aware that accidents and emergencies might occur.

In the event of such an incidence, you will need to know how to proceed. Read through this brochure from time to time and keep it close at hand in case of emergency.

Get an overview of where the emergency escape routes are, where you can find defibrillators and other emergency devices such as fire extinguishers for initially fighting the fire, where the evacuation safety points are – both inside and outside the building in which you are located.

We wish you much success – and safety – during your stay here at the Montanuniversität Leoben.

The following is an overview of the procedures that are to be followed in cases of emergencies.

The fundamental rule of behaviour in an emergency is:

**Do not put yourself in danger to help others – your own safety comes first!**

## ALARMS

The alarm for evacuation of the buildings is given by a loud, shrill signal tone.

The fire department is automatically notified via an alarm transmission device.

In the event of an alarm, the elevators move automatically to the escape level and cannot be used until the all-clear is given.

## BEHAVIOUR IN THE EVENT OF AN ALARM

When an alarm is triggered, please follow the **green escape route signs** and leave the building via the nearest escape staircase.

Proceed to the nearest **assembly point**. The assembly point is shown below in this folder under the individual building descriptions.



*Escape route*



*Assembly point*



## BEHAVIOUR IN CASE OF FIRE

### KEEP CALM!

#### 1. SET OFF AN ALARM

Call the fire brigade on **122** or push the **detector button**

#### 2. RESCUE

#### 3. CLOSE DOORS AND WINDOWS

#### 4. PUT OUT THE FIRE (if possible)

Please observe the following fire protection signs!



*Fire extinguishing device*



*Fire hose*



*Direction indication*

#### 5. EXITING THE BUILDING

Leave the building and go to the assembly point. Under no circumstances return to the building until it has been cleared by emergency personnel.

#### 6. REPORT IMPORTANT INFORMATION TO EMERGENCY PERSONNEL



*Push the detector button*

## USE OF THE LIFTS

Lifts may not be used in case of fire!

**Do not use lifts in case of fire**

## NO SMOKING

We kindly ask you to observe the **smoking ban** in all buildings of the Montanuniversitaet Leoben.

## BEHAVIOUR DURING EVACUATION

Evacuation of a building may be ordered due to fire, bomb threat, gas leak etc.

#### 1. INFORM OTHERS

#### 2. FOLLOW INSTRUCTIONS

Follow the instructions of the evacuation officer or emergency services.

#### 3. CALMLY LEAVE THE BUILDING

Do not under any circumstances return to the building until it has been cleared by the emergency services.

#### 4. GO TO THE ASSEMBLY POINT

#### 5. REPORT IMPORTANT INFORMATION TO EMERGENCY SERVICES



*Smoking ban*



*Evacuation*



You will find materials for **First Aid** at marked locations.



The location of the **defibrillators** in each of the buildings at the Montanuniversitaet Leoben is described in detail on site.

Gatekeeper in the main building	7700
Building services	7060
Occupational medicine	7008
Occupational safety	7062
Fire Safety Officer	7066

Montanuniversitaet emergency  
 number (0) 0664/88989603  
 Fire brigade (0) 122  
 Police (0) 133  
 Emergency medical services (0) 144  
 Emergency doctor on call (0) 141  
 Leoben General Hospital (0) 401-0  
 Poison information  
 centre (0) 01/4064343

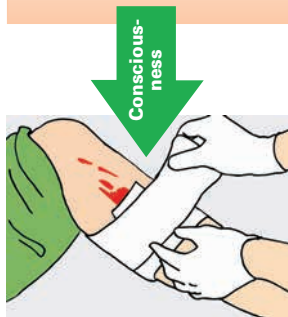
Please note that emergency numbers can only be reached from university internal telephones by dialling the prefix "0"!

## Basis

- Keep CALM
- Secure the ACCIDENT SITE
- Keep YOUR OWN SAFETY in mind



**Address loudly,  
touch, shake**



**Help as the situation requires**  
**i. e. treating wounds**

**Keep monitoring consciousness and breathing!**

## 112

- **WHERE** is the emergency?
- **WHAT** happened?
- **HOW** many people are injured?
- **WHAT** type of injury is it?
- **WAIT** for questions!



Hands in the centre  
of the chest  
Depth 4-5 cm  
Speed 100/min

Blow air into  
mouth or nose  
for 1 sec



**not  
detected**

**Call for help!**



**Clear airways,  
bend head backwards,  
see / hear / feel max. 10 sec.**



### Stable lateral position

# UNIVERSITY CAMPUS



## A1 Main building

01 HG – Franz-Josef-Straße 18

A2 Rittinger building (RI)

A3 Chemistry building (CH)

A4 Environment protection building (UM)

A5 Metallurgy building (ME)

A6 Workshop (WH)

A7 Erzherzog Johann Tract (EJT Auditorium)

## B Peter Tunner Building

50 PTG – Peter-Tunner-Straße 5

## C Petroleum Engineering

21 PE – Parkstraße 27

## D Technology Transfer Centre

30 TTZ – Peter-Tunner-Straße 25

## E Raw Materials and Materials Centre

40 RWZ – Erzherzog-Johann-Straße 3

## F Impulse Centre for Materials

80 IZW – Roseggerstraße 12

## G Centre for Plastics Technology

71 KT – Otto-Glöckel-Straße 2

## H Academy Montanuniversitaet Leoben

70 AMU – Peter-Tunner-Straße 15

## I Impulse Centre for Raw Materials

85 IZR – Roseggerstraße 11a

## J Parkstraße 31

22 PS – Parkstraße 31

## K Student's Centre

35 SZ – Peter-Tunner-Straße 23

## R Zentrum für angewandte Technologie Leoben GmbH

ZAT – Peter-Tunner-Straße 19

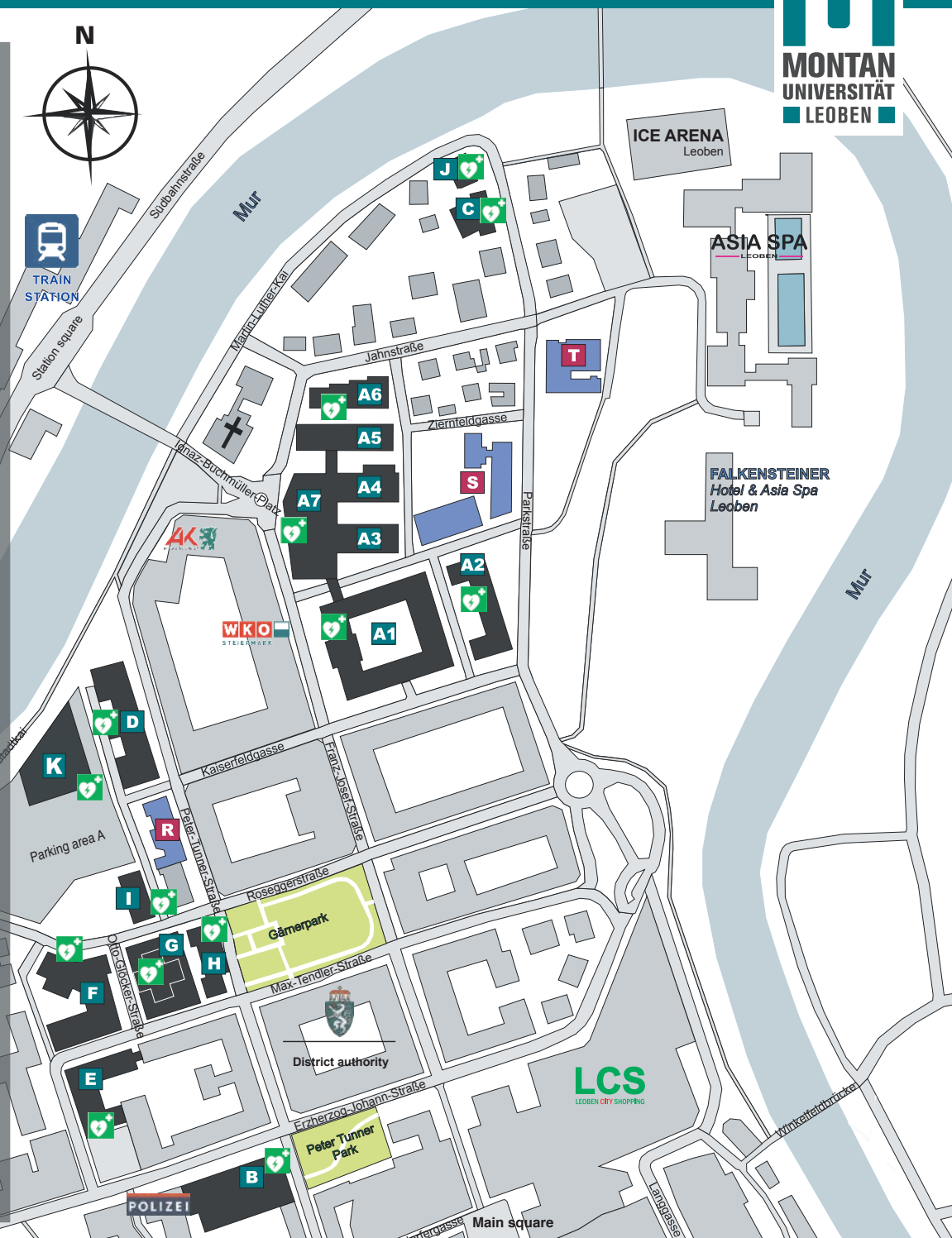
## S Österreichisches Gießerei-Institut

ÖGI – Parkstraße 21

## T Österreichische Akademie der Wissenschaften

10 AK – Jahnstraße 12

 Defibrillator locations





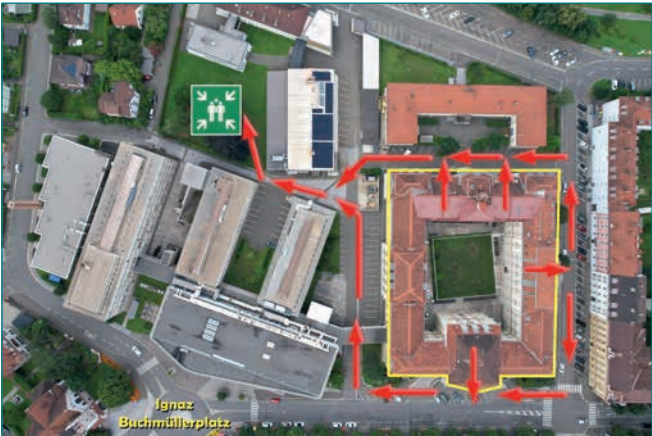
View of the Main Building



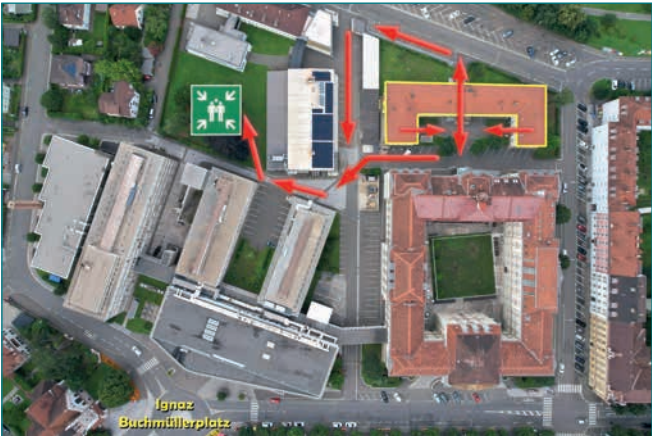
View of the Rittinger Building



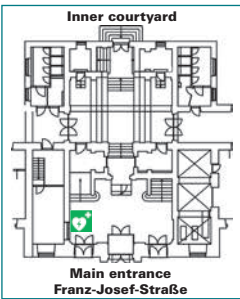
Assembly Point



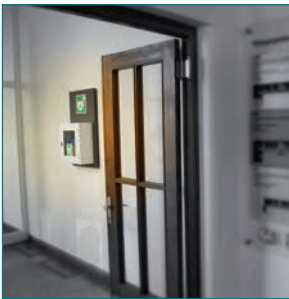
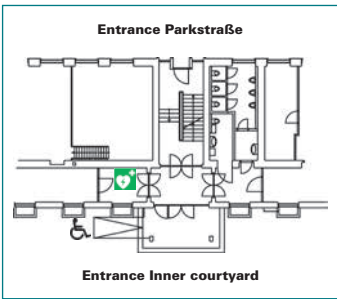
Assembly Point



Location of Defibrillator



Location of Defibrillator



### View of the Chemistry Building



### View of the Environment Protection Building



### Assembly Point



### Assembly Point



### Location of Defibrillator



The nearest  
**DEFIBRILLATOR**  
is located in the  
**ERZHERZOG JOHANN WING!**

### Location of Defibrillator



The nearest  
**DEFIBRILLATOR**  
is located in the  
**ERZHERZOG JOHANN WING!**



View of the Metallurgy Building



View of the Workshops' Building



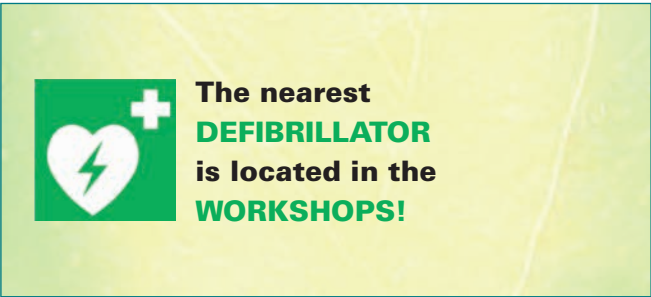
Assembly Point



Assembly Point



Location of Defibrillator



Location of Defibrillator





View of the Erzherzog Johann Tract Building



Ignaz Buchmüller-Platz

View of the Peter Tunner Building



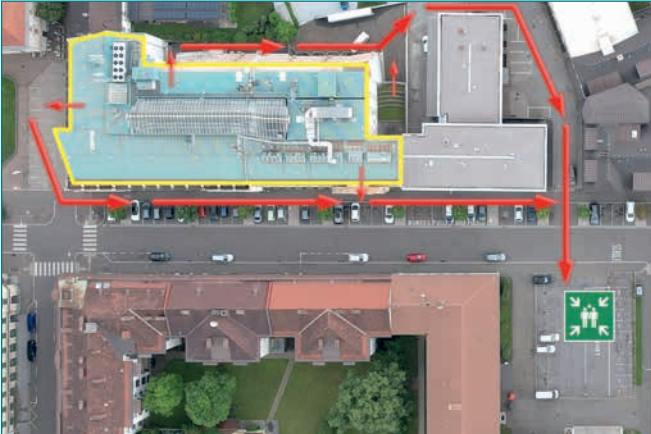
Peter-Tunner-Straße 5

Assembly Point

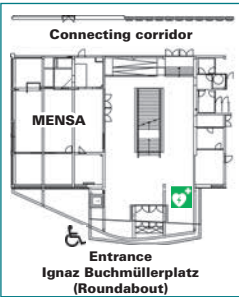


Ignaz Buchmüllerplatz

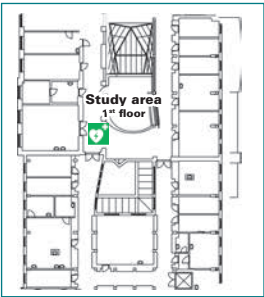
Assembly Point



Location of Defibrillator



Location of Defibrillator



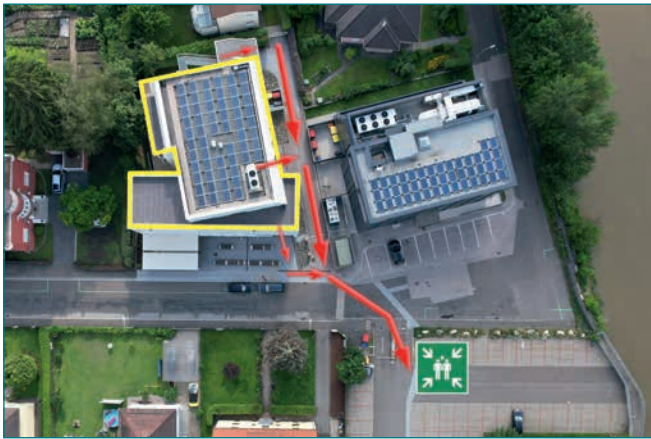
## View of the Petroleum Engineering building



## View of the Technology Transfer Centre



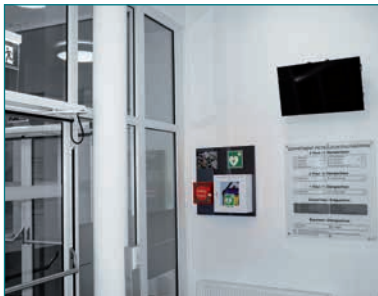
## Assembly Point



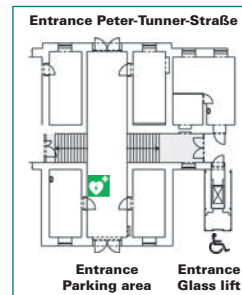
## Assembly Point



## Location of Defibrillator



## Location of Defibrillator





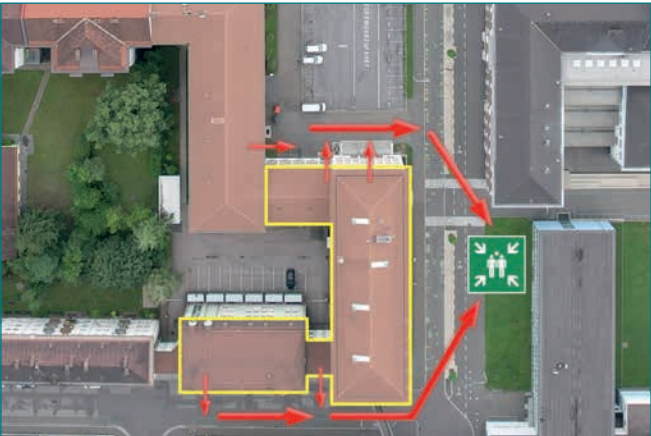
View of the Raw Materials and Material Centre Building



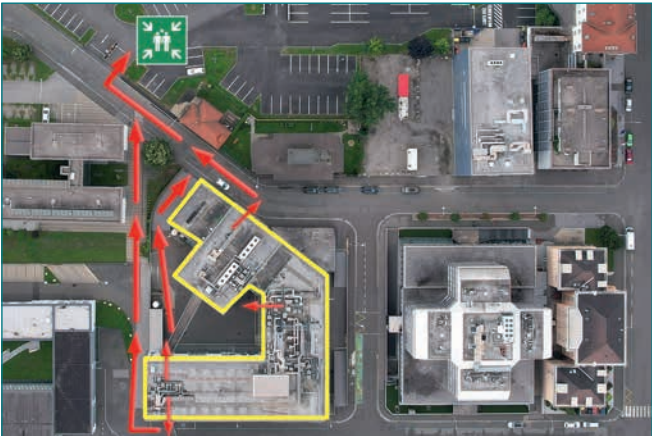
View of the Impulse Centre for Materials Building



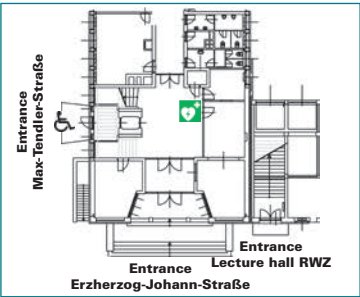
Assembly Point



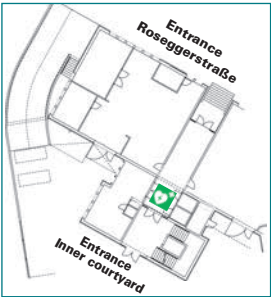
Assembly Point



Location of Defibrillator



Location of Defibrillator





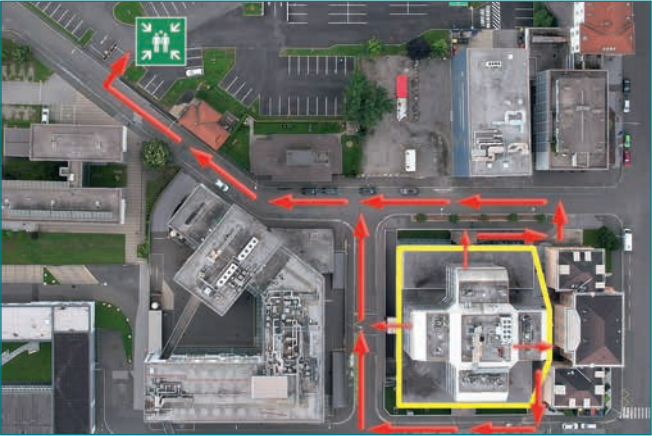
View of the Centre for Plastics Technology Building



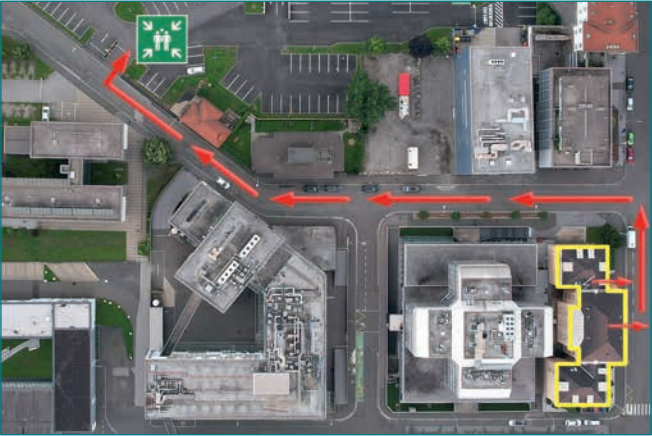
View of the Montanuniversitaet Leoben Academy Building



Assembly Point



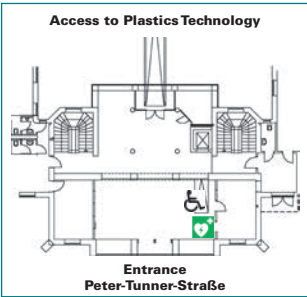
Assembly Point



Location of Defibrillator



Location of Defibrillator



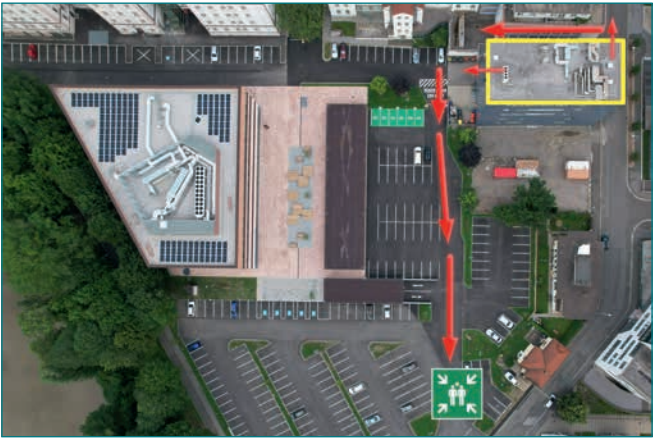
View of the Impulse Centre for Raw Materials Building



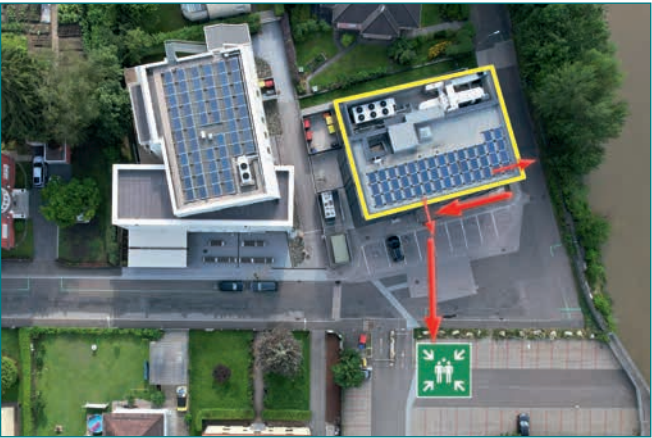
View of the Parkstraße 31 Building



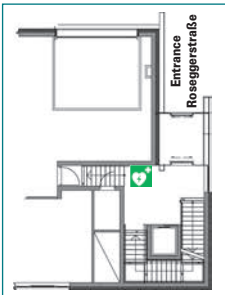
Assembly Point



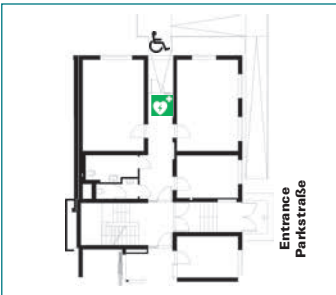
Assembly Point



Location of Defibrillator



Location of Defibrillator





View of the Student’s Centre Building



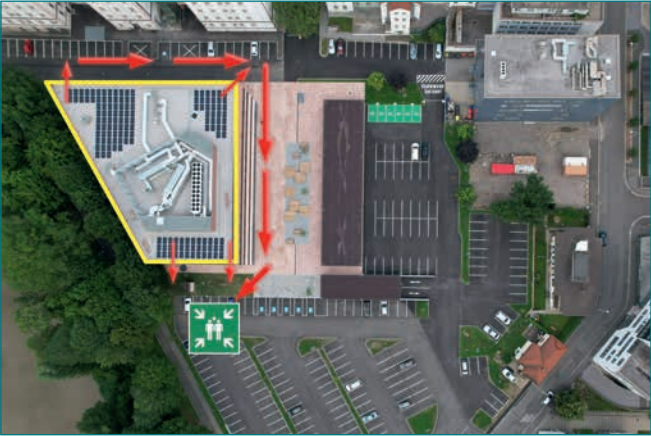
Peter-Tunner-Straße 23

View of the Montanuniversitaet Branch Building in Gams



Gams 45, 8130 Frohnleiten

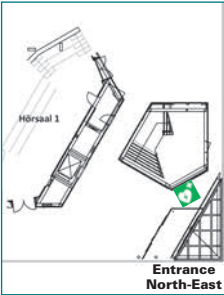
Assembly Point



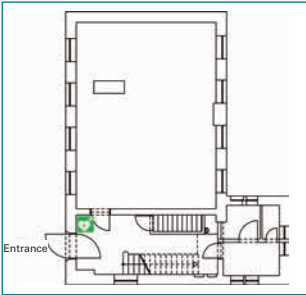
Assembly Point



Location of Defibrillator



Location of Defibrillator







## As a general rule, the following applies to all buildings and premises of the Montanuniversität Leoben:



No smoking



Handling open fire & light or flammable liquids is prohibited.



Access restriction!  
Stay away from marked danger areas.



Mandatory, prohibitive and warning signs are to be observed. They are not to be removed or made unrecognisable.



Noise of any kind is prohibited.



No use of sports equipment inside the buildings.



No animals...



...with the exception of guide dogs for the blind, partner dogs and security service dogs



Taking weapons of any kind, wearing, and carrying them is prohibited.

## LEGAL NOTICE:

### Media owner and publisher:

Montanuniversität Leoben, Rectorate

### Planning, design and development:

Robert Lieb

### Graphics:

Montanuniversität Leoben, Robert Lieb

### Photos:

Foto Freisinger, Robert Lieb

### Orthophotos:

© BEV 2019, Reproduced with the permission of the Federal Office of Metrology and Surveying in Vienna [BEV – Bundesamt für Eich- und Vermessungswesen], N2019/57215

### Printed by:

Universal Druckerei GmbH, 8700 Leoben