



Technical University
of Leoben

**Correct behaviour in
cases of emergency**

**at the
Technical University
of Leoben**

FOR YOUR SAFETY!

WELCOME AT THE TECHNICAL UNIVERSITY OF LEOBEN!

AN EMERGENCY IS CHALLENGING FOR US ALL

Being confronted with exceptional circumstances means having to act quickly while remaining calm.

But how should we react when a medical emergency occurs or a fire breaks out close to us?

This brochure will explain the best ways for us as visitors or members of the Technical University of Leoben to behave in such situations.

You need to be aware that accidents and emergencies might occur.

In the event of such an incidence, you will need to know how to proceed. Read through this brochure from time to time and keep it close at hand in case of emergency.

Get an overview of where the emergency escape routes are, where you can find defibrillators and other emergency devices such as fire extinguishers for initially fighting the fire, where the evacuation safety points are – both inside and outside the building in which you are located.

We wish you much success – and safety – during your stay here at the Technical University of Leoben.

The following is an overview of the procedures that are to be followed in cases of emergencies.

The fundamental rule of behaviour in an emergency is:

Do not put yourself in danger to help others – your own safety comes first!

ALARMS

The alarm for evacuation of the buildings is given by a loud, shrill signal tone.

The fire department is automatically notified via an alarm transmission device.

In the event of an alarm, the elevators move automatically to the escape level and cannot be used until the all-clear is given.

BEHAVIOUR IN THE EVENT OF AN ALARM

When an alarm is triggered, please follow the **green escape route signs** and leave the building via the nearest escape staircase.

Proceed to the nearest **assembly point**. The assembly point is shown below in this folder under the individual building descriptions.



Escape route



Assembly point



BEHAVIOUR IN CASE OF FIRE

KEEP CALM!

1. SET OFF AN ALARM

Call the fire brigade on **122** or push the **detector button**

2. RESCUE

3. CLOSE DOORS AND WINDOWS

4. PUT OUT THE FIRE (if possible)

Please observe the following fire protection signs!



Fire extinguishing device



Fire hose



Direction indication

5. EXITING THE BUILDING

Leave the building and go to the assembly point. Under no circumstances return to the building until it has been cleared by emergency personnel.

6. REPORT IMPORTANT INFORMATION TO EMERGENCY PERSONNEL



Push the detector button

USE OF THE LIFTS

Lifts may not be used in case of fire!

Do not use lifts in case of fire

NO SMOKING

We kindly ask you to observe the **smoking ban** in all buildings of the Technical University of Leoben.

BEHAVIOUR DURING EVACUATION

Evacuation of a building may be ordered due to fire, bomb threat, gas leak etc.

1. INFORM OTHERS

2. FOLLOW INSTRUCTIONS

Follow the instructions of the evacuation officer or emergency services.

3. CALMLY LEAVE THE BUILDING

Do not under any circumstances return to the building until it has been cleared by the emergency services.

4. GO TO THE ASSEMBLY POINT

5. REPORT IMPORTANT INFORMATION TO EMERGENCY SERVICES



Smoking ban



Evacuation



You will find materials for **First Aid** at marked locations.



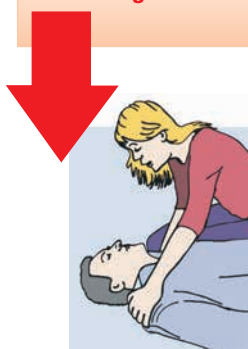
The location of the **defibrillators** in each of the buildings at the Technical University of Leoben is described in detail on site.

Gatekeeper in the main building	7700
Building services	7060
Occupational medicine	7008
Occupational safety	7062
Fire Safety Officer	7066

Technical University emergency number	(0) 0664/88989603
Fire brigade	(0) 122
Police	(0) 133
Emergency medical services	(0) 144
Emergency doctor on call	(0) 141
Leoben General Hospital	(0) 401-0
Poison information centre	(0) 01/4064343

Please note that emergency numbers can only be reached from university internal telephones by dialling the prefix "0"!

- Keep CALM
- Secure the ACCIDENT SITE
- Keep YOUR OWN SAFETY in mind



**Address loudly,
touch, shake**



Keep monitoring consciousness and breathing!

- **WHERE** is the emergency?
- **WHAT** happened?
- **HOW** many people are injured?
- **WHAT** type of injury is it?
- **WAIT** for questions!



Hands in the centre
of the chest
Depth 4-5 cm
Speed 100/min

Blow air into
mouth or nose
for 1 sec



**not
detected**

Call for help!



**Clear airways,
bend head backwards,
see / hear / feel max. 10 sec.**



Stable lateral position



GENERAL SAFETY INSTRUCTIONS

LABORATORIES, TEST FIELDS, PILOT PLANTS AND WORKSHOPS

The safe operation of all facilities is the basis for research, teaching and education at our university. As a university research institution, we operate laboratories we operate laboratories, test fields pilot plants and workshops with hazardous substances, hazardous and highly sensitive equipment.

It is therefore important to fulfill special safety requirements must be met, also for people from outside the university.

Therefore, in your and our interest, please interest the following general safety safety instructions:

VISITORS

Access to some areas is only permitted when accompanied by authorized personnel of the Technical University of Leoben. Follow the instructions and safety instructions of your supervisor and always stay on the marked paths. If necessary, access is only permitted with suitable footwear.

COMPANIES

Companies must comply with the General health and safety regulations of the Technical University of Leoben.

SAFETY LABELING

Mandatory, prohibition, warning and information signs at the individual lab-

oratories, test fields, pilot plants and workshops must be observed.

Below you will find an overview of the hazard categories and their meaning:

WARNING SIGNS

e.g.



General danger



Electrical voltage

PROHIBITION SIGN

e.g.



No entry



No smoking

BID SIGN (BODY PROTECTION)

e.g.



Wear safety goggles



Use ear protection

FIRE SAFETY SIGNS

e.g.



Fire extinguisher



Fire alarm

RESCUE SIGNS

e.g.



Emergency exit



First Aid

HAZARDOUS SUBSTANCE SYMBOLS

e.g.



Explosive



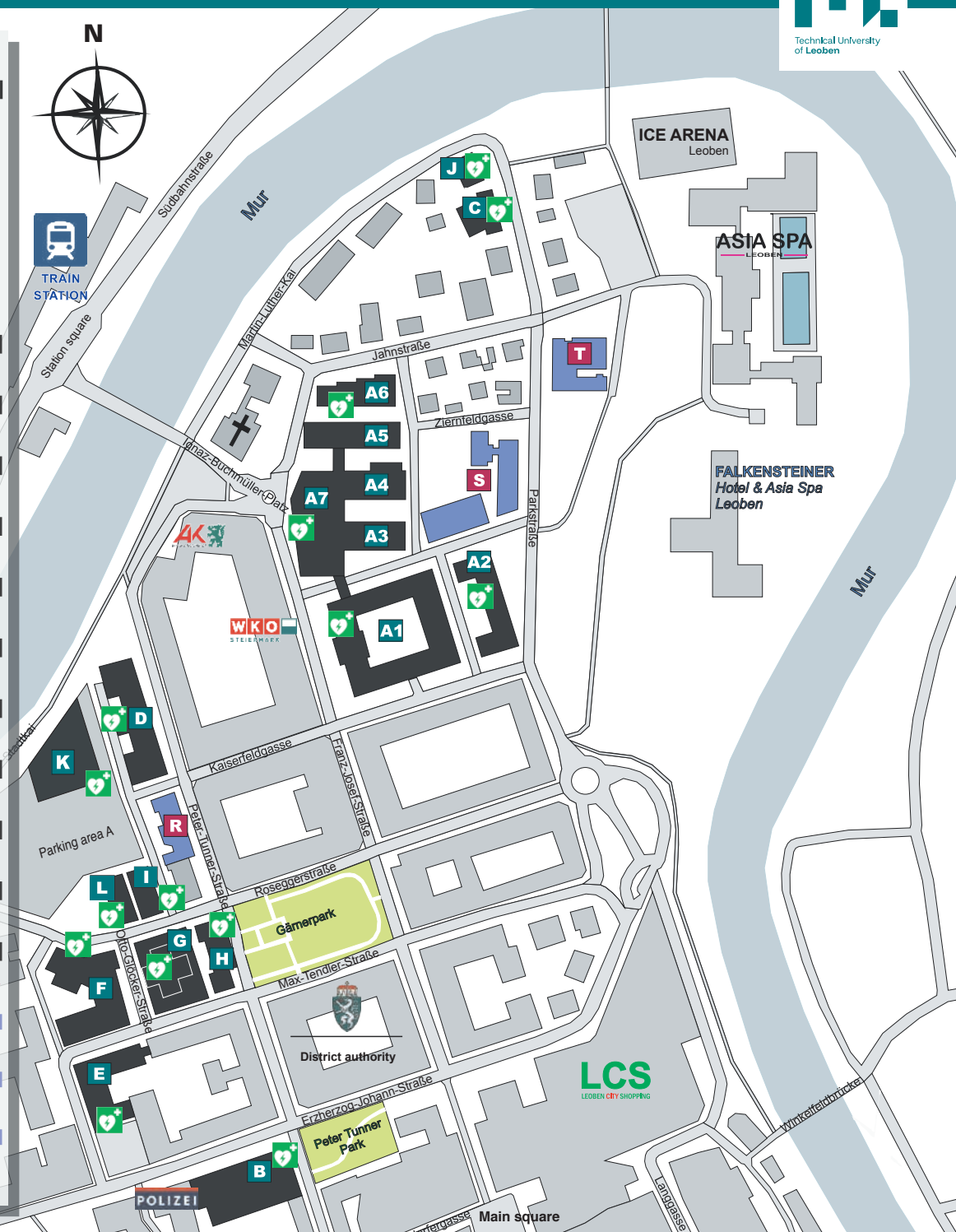
Health hazard



Corrosive

UNIVERSITY CAMPUS

- A1** Main building
- 01** HG – Franz Josef-Straße 18
- A2** Rittinger building (RI)
- A3** Chemistry building (CH)
- A4** Environment protection building (UM)
- A5** Metallurgy building (ME)
- A6** Work Shop (WH)
- A7** Erzherzog Johann Tract (EJT Auditorium)
- B** Peter Tunner Building
- 50** PTG – Peter Tunner-Straße 5
- C** Petroleum Engineering
- 21** PE – Parkstraße 27
- D** Technology Transfer Centre
- 30** TTZ – Peter Tunner-Straße 25
- E** Raw Materials and Materials Centre
- 40** RWZ – Erzherzog Johann-Straße 3
- F** Impulse Centre for Materials
- 80** IZW – Roseggerstraße 12
- G** Centre for Plastics Technology
- 71** KT – Otto Glöckel-Straße 2
- H** Academy Technical University of Leoben
- 70** AMU – Peter Tunner-Straße 15
- I** Impulse Centre for Raw Materials
- 85** IZR – Roseggerstraße 11a
- J** Parkstraße 31
- 22** PS – Parkstraße 31
- K** Study Centre
- 35** SZ – Peter Tunner-Straße 23
- L** House of Digitalisation
- 84** DIG – Roseggerstraße 11
- R** Centre for Applied Technology Leoben
- ZAT** – Peter Tunner-Straße 19
- S** Austrian Foundry Research Institute
- ÖGI** – Parkstraße 21
- T** Austrian Academy of Sciences
- 10** AK – Jahnstraße 12
- Defibrillator locations**



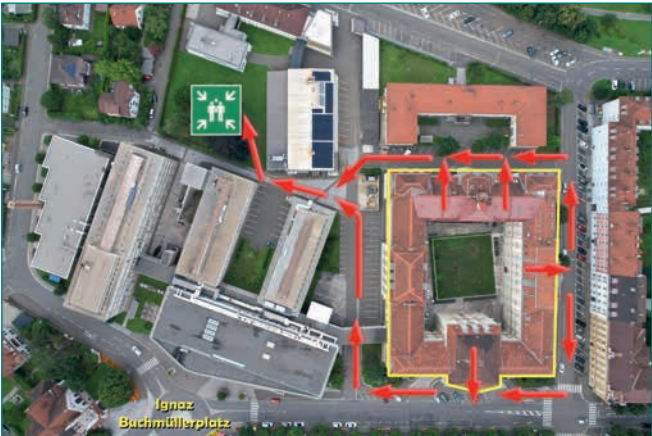
View of the Main Building



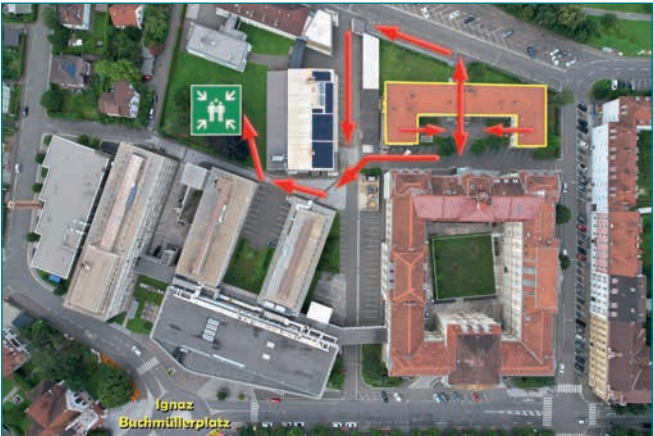
View of the Rittinger Building



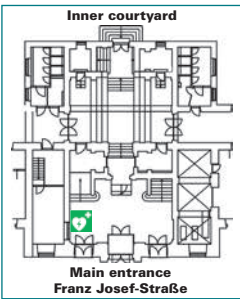
Assembly Point



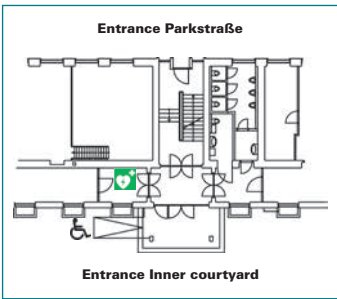
Assembly Point



Location of Defibrillator



Location of Defibrillator



View of the Chemistry Building



Assembly Point



Location of Defibrillator



The nearest
DEFIBRILLATOR
is located in the
ERZHERZOG JOHANNTRACT!

View of the Environment Protection Building



Assembly Point



Location of Defibrillator



The nearest
DEFIBRILLATOR
is located in the
ERZHERZOG JOHANNTRACT!

View of the Metallurgy Building



View of the Work Shop Building



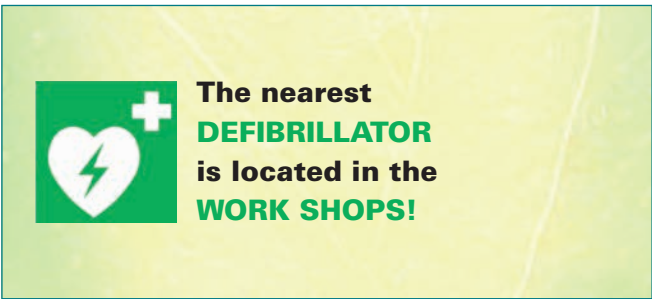
Assembly Point



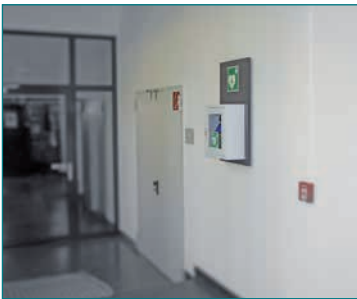
Assembly Point



Location of Defibrillator



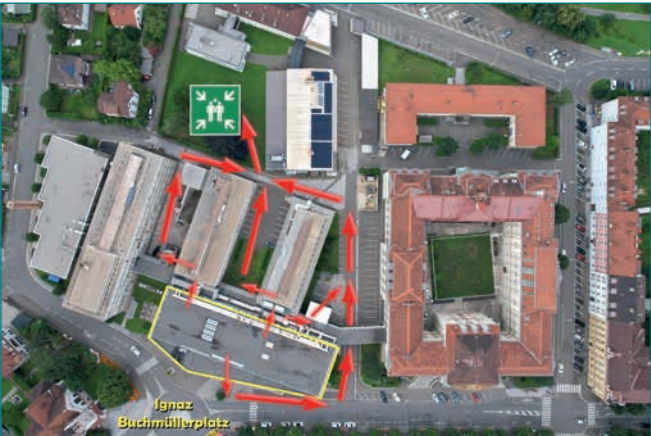
Location of Defibrillator



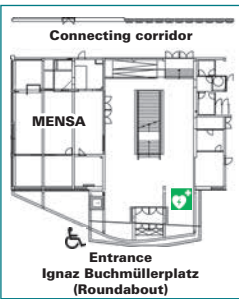
View of the Erzherzog Johann Tract Building



Assembly Point



Location of Defibrillator



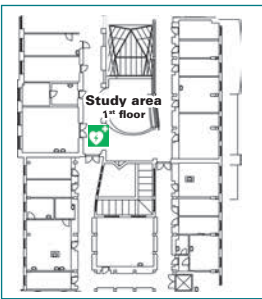
View of the Peter Tunner Building



Assembly Point



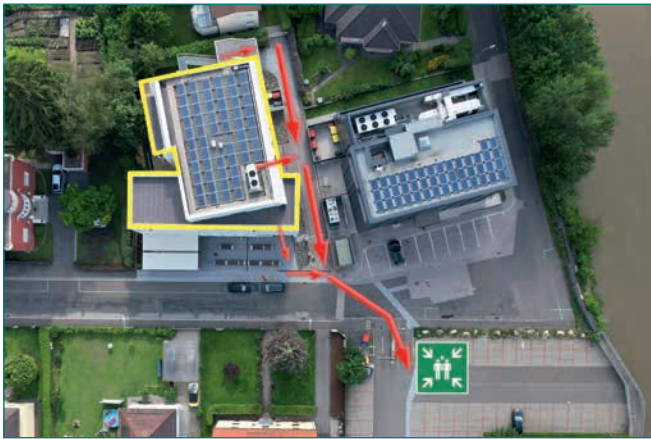
Location of Defibrillator



View of the Petroleum Engineering Building



Assembly Point



Location of Defibrillator



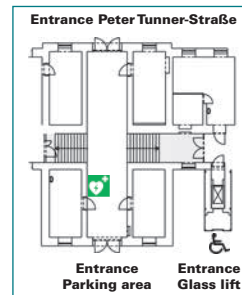
View of the Technology Transfer Centre Building



Assembly Point



Location of Defibrillator



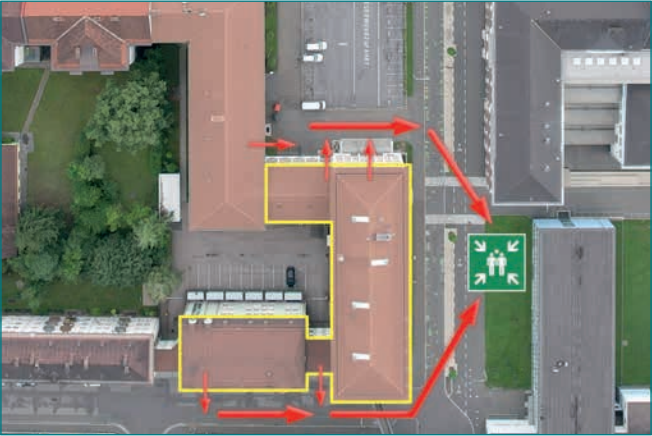
View of the Raw Materials and Material Centre Building



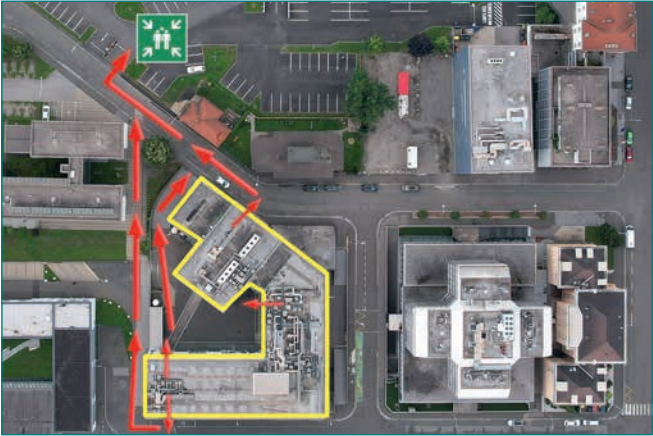
View of the Impulse Centre for Materials Building



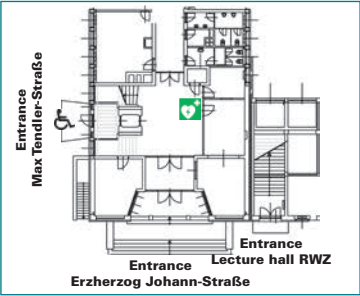
Assembly Point



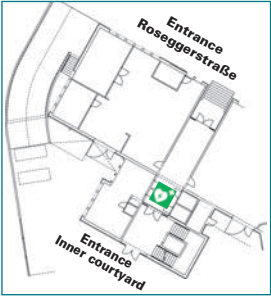
Assembly Point



Location of Defibrillator



Location of Defibrillator



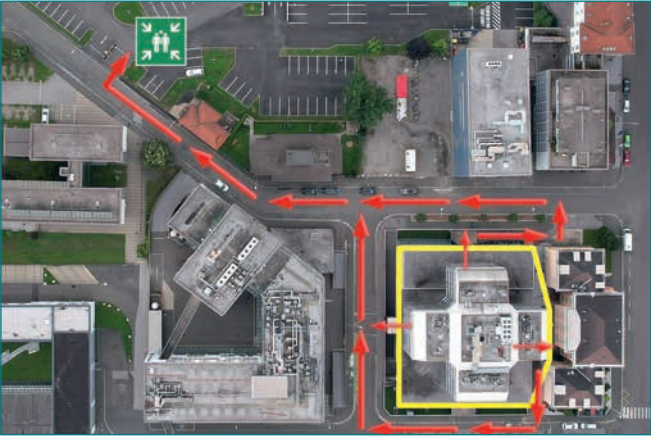
View of the Centre for Plastics Technology Building



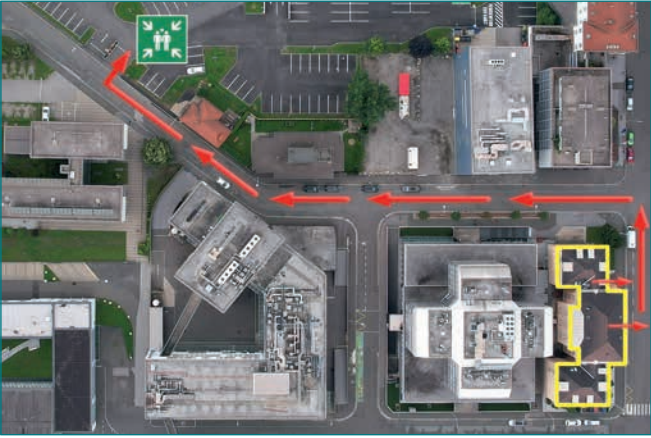
View of the Academy Technical University of Leoben Building



Assembly Point



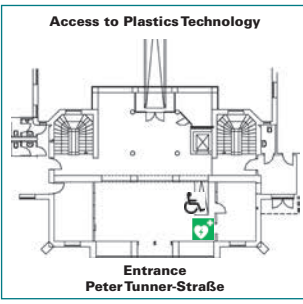
Assembly Point



Location of Defibrillator



Location of Defibrillator



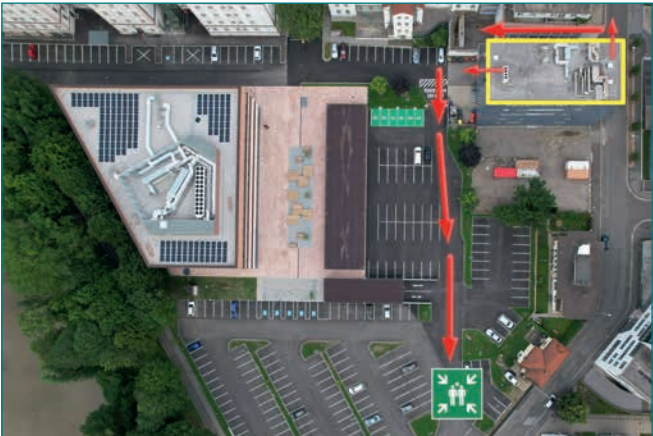
View of the Impulse Centre for Raw Materials Building



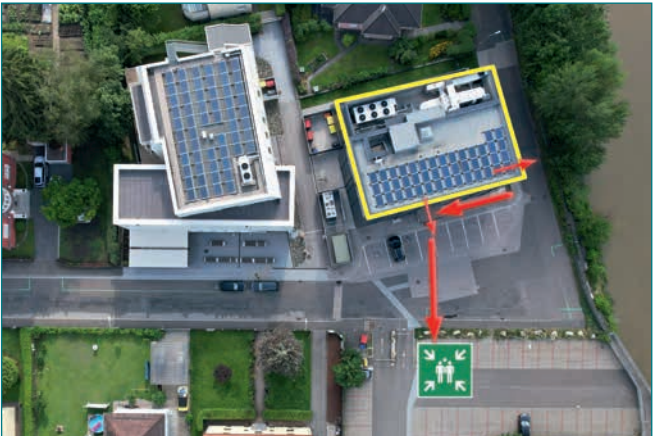
View of the Parkstraße 31 Building



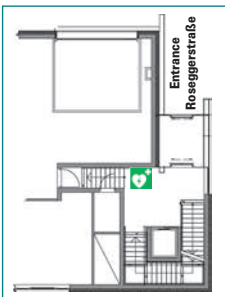
Assembly Point



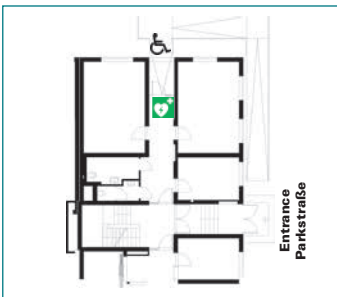
Assembly Point



Location of Defibrillator



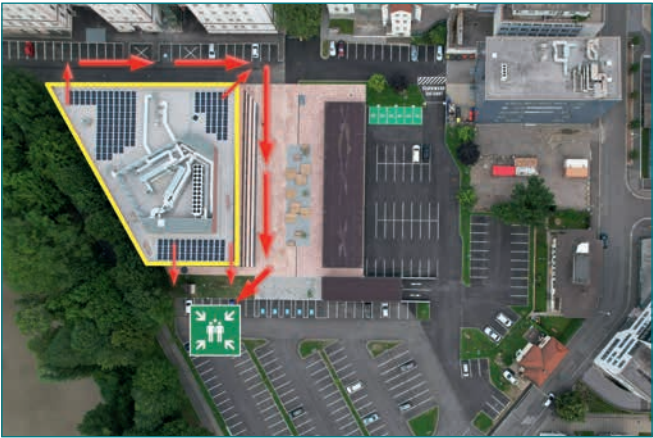
Location of Defibrillator



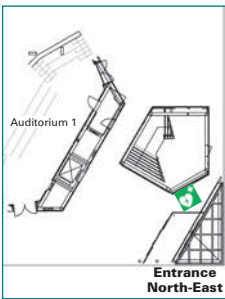
View of the Study Centre Building



Assembly Point



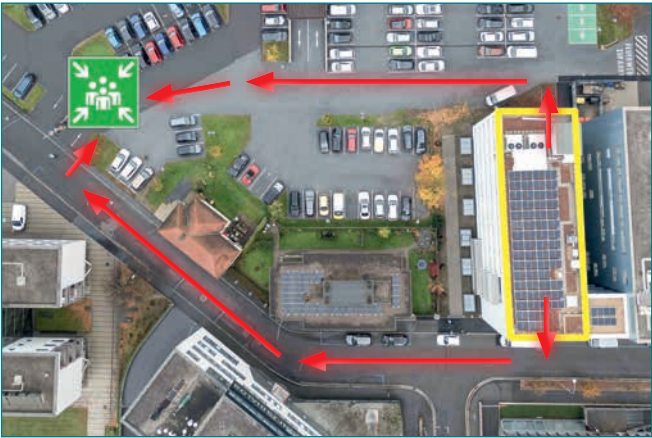
Location of Defibrillator



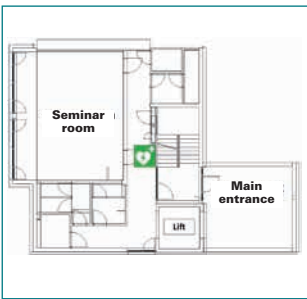
View of House of Digitalisation Building



Assembly Point



Location of Defibrillator



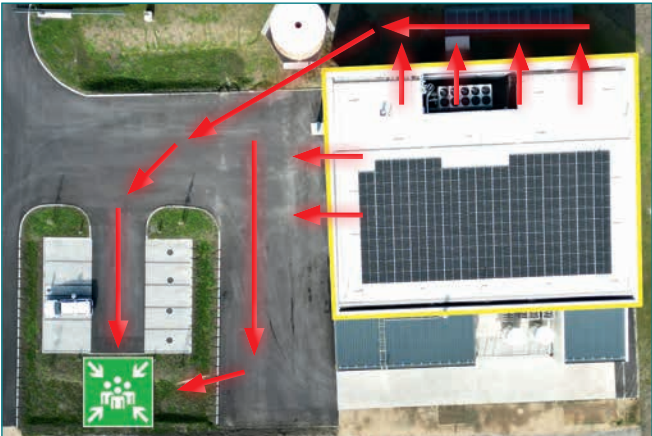
View of Centre for Hydrogen Research Building



View of the Branch Office Gams



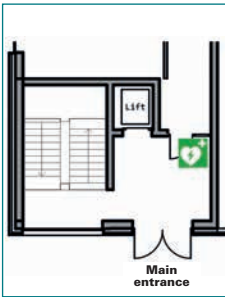
Assembly Point



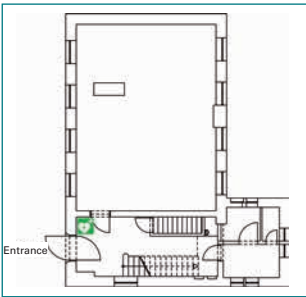
Assembly Point



Location of Defibrillator



Location of Defibrillator





As a general rule, the following applies to all buildings and premises of the Technical University of Leoben:



No smoking



Handling open fire & light or flammable liquids is prohibited.



Access restriction!
Stay away from
marked danger areas.



Mandatory,
prohibitive and
warning signs are
to be observed.
They are not to be
removed or made
unrecognisable.



Noise of any kind
is prohibited.



No use of sports
equipment inside
the buildings.



No animals...



...with the
exception of guide
dogs for the blind,
partner dogs and
security service
dogs



Taking weapons of
any kind, wearing,
and carrying them
is prohibited.

LEGAL NOTICE:

Media owner and publisher:

Technical University of Leoben, Rectorate

Planning, design and development:

Robert Lieb

Graphics:

Technical University of Leoben, Robert Lieb

Photos:

Foto Freisinger, Robert Lieb

Orthophotos:

© BEV 2019, Reproduced with the permission of the Federal Office of Metrology and Surveying in Vienna [BEV – Bundesamt für Eich- und Vermessungswesen], N2019/57215

Printed by:

Universal Druckerei GmbH, 8700 Leoben